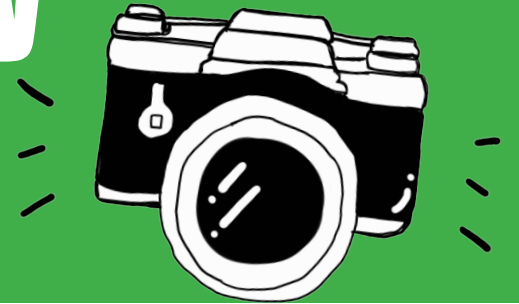


# Webster County Fair Open Photography Call for entries



**All skill levels welcome!**

**Enjoy taking photos?**

**Would you like to have them displayed during the fair?**

We welcome you to submit your photos to the open photography class during the 2025 Webster County Fair.

Submissions will be accepted in person between June 20 and July 3, 2025.

Bring your mounted or matted photos to the Webster County Extension Office located at 822 Central Ave Suite 102, Fort Dodge, IA.

Extension office hours are Monday - Friday 8 am - 4:30 pm.

Divisions for Adult and Youth entries

## CLASS

1. Color – Landscape
2. Color – People
3. Color – Animal, bird, etc (any live creature)
4. Color – Miscellaneous
5. Black and White – Landscape
6. Black and White – People
7. Black and White – Animal bird, etc, (any live creature)
8. Black and White – Miscellaneous

There is a \$1.00 fee per photo entry to cover the cost of your ribbon.

Ribbons will be awarded for each photo and awards will be given in each category

Please visit our website for registration information and rules:

[webstercountyfairgroundsia.com](http://webstercountyfairgroundsia.com)

**All photos will be on display during the Webster County Fair  
in the East Auditorium July 16 - July 20, 2025**

## Webster County Fair Open Photography

### 2025 Webster County Fair

**ENTRY DATES: June 20 - July 3**

**Exhibit Dates: July 16 - July 20**

East Auditorium

#### JUDGE

To be announced

#### AWARDS

Best of Show Adult – Rosette

Best of Show Youth – Rosette

1<sup>st</sup> place will be awarded in each class for both youth and adult  
Each entry will receive a Blue, Red or White ribbon unless  
receiving one of the special awards above.

#### ENTRY FEE

\$1.00 per entry/all entries will receive a ribbon

Up to two works per photographer per class for seniors  
and three for juniors

REGISTRATION: June 20 - July 3, bring entries in  
person to the Webster County Extension Office (822  
Central Ave Suite 102, Fort Dodge, IA 50501). Office  
hours are Monday –Friday 8 am – 4:30 pm.

ELIGIBILITY: No work previously exhibited in the  
Webster County Fair Open Class will be accepted.  
Work must be original and the work of the  
photographer. Youth class is seventeen and under, Adult  
class is 18 and over.

#### PRESENTATION:

- All photographs must be mounted and unframed.  
There should be no hooks or wires attached. Do  
NOT cover photos with acetate or glass.  
Maximum size is 16" x 20" Minimum size is  
5"x7" (including matting).
- Attach entry tag to the upper left corner on back.  
Each entry must have an entry tag attached
- Photos may be displayed with bulldog clips at  
the fairgrounds

Judging will be done prior to fair

Judge will decide which ribbons are to be awarded. In  
class where there is no competition, judge will not award  
the top premium unless he/she feels the exhibit is worthy  
of one. In case of ties, more than one ribbon may be  
awarded (except for rosettes and special awards)

The management will use all diligence to ensure the  
safety of all entries after their arrival and arrangement,  
but in no case will be responsible for any loss or damage  
that may occur.

Superintendents have the option to close judging to the  
public.

JUDGING RESULTS: Judging results will be on display  
at the Webster County Fair beginning July 16, 2025.

Pick up of photos from the Webster County Extension  
Office after July 25, 2025.

#### CLASS

1. Color – Landscape
2. Color – People
3. Color – Animal, bird, etc (any live creature)
4. Color – Miscellaneous
5. Black and White – Landscape
6. Black and White – People
7. Black and White – Animal bird, etc, (any live  
creature)
8. Black and White – Miscellaneous

---

Photography Release Consent (Junior Class):

Yes, pictures of my child may be used for publicity, news  
articles, and on the Webster County web pages.

No, do not use pictures of my child.

Parent/Guardian Signature

---

# 2025 Webster County Fair Open Photography Entry Form

# of Entries \_\_\_\_\_ x \$1 = \_\_\_\_\_

Up to two works per photographer per class for adults and three for youth

Mounted/matted photos must be between 5x7" and 16x20" (including mounting/matting)

\_\_\_\_\_ Adult (18 & over)

\_\_\_\_\_ Youth (17 & Under) \_\_\_\_\_ Age (if Youth)

Name: \_\_\_\_\_

Mailing Address: \_\_\_\_\_

E-Mail: \_\_\_\_\_

Phone: \_\_\_\_\_

List of photos being entered

for office  
use only

| Class # | Title | Award |
|---------|-------|-------|
|         |       |       |
|         |       |       |
|         |       |       |
|         |       |       |
|         |       |       |
|         |       |       |
|         |       |       |
|         |       |       |
|         |       |       |
|         |       |       |

**Please bring entries in person to the Webster County Extension Office between June 20 - July 3.  
822 Central Ave Suite 102, Fort Dodge, IA 50501**

## Entry Blanks

Please PRINT CLEARLY. As you face the BACK of each photo, attach label in UPPER LEFT-HAND CORNER

|                                                                                                                                                                                                                                  |                                                                                                                                                                                                                                  |
|----------------------------------------------------------------------------------------------------------------------------------------------------------------------------------------------------------------------------------|----------------------------------------------------------------------------------------------------------------------------------------------------------------------------------------------------------------------------------|
| <p>please circle Youth Adult</p> <p>Name _____</p> <p>Address _____</p> <p>City _____</p> <p>Class # _____</p> <p>Age (if Youth) _____</p> <p>Photo Title _____</p> <p>_____</p> <p>Best In Show 1st In Class Blue Red White</p> | <p>please circle Youth Adult</p> <p>Name _____</p> <p>Address _____</p> <p>City _____</p> <p>Class # _____</p> <p>Age (if Youth) _____</p> <p>Photo Title _____</p> <p>_____</p> <p>Best In Show 1st In Class Blue Red White</p> |
|----------------------------------------------------------------------------------------------------------------------------------------------------------------------------------------------------------------------------------|----------------------------------------------------------------------------------------------------------------------------------------------------------------------------------------------------------------------------------|